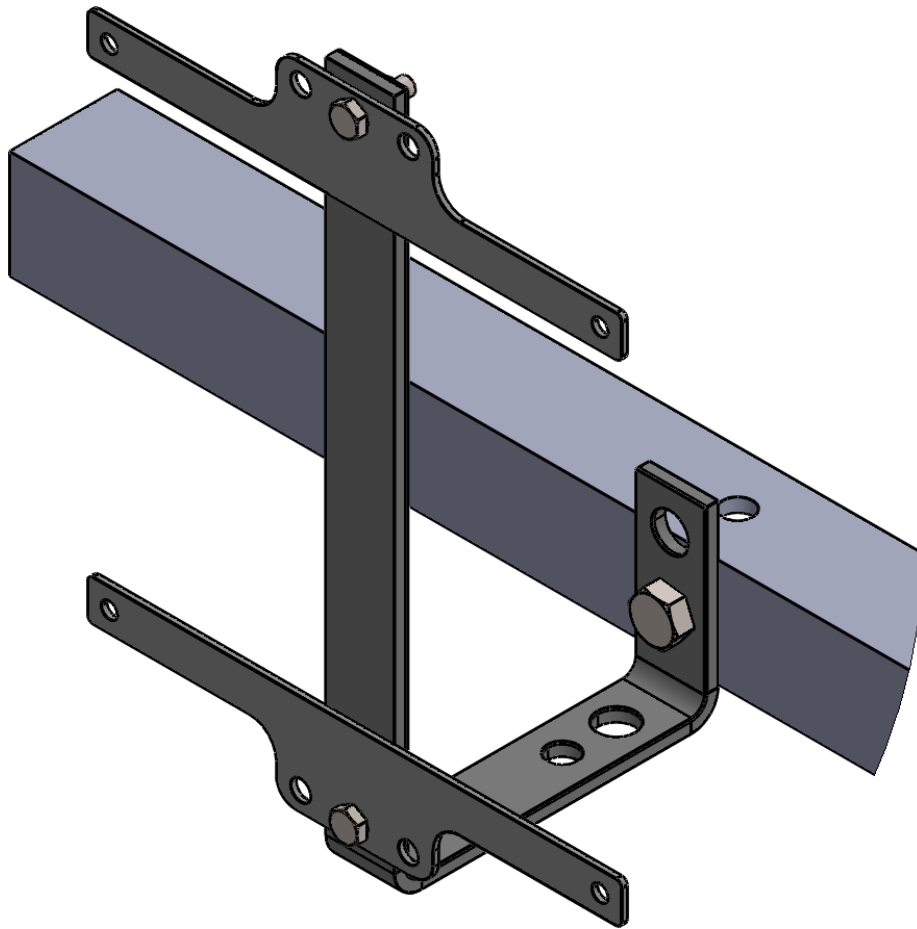
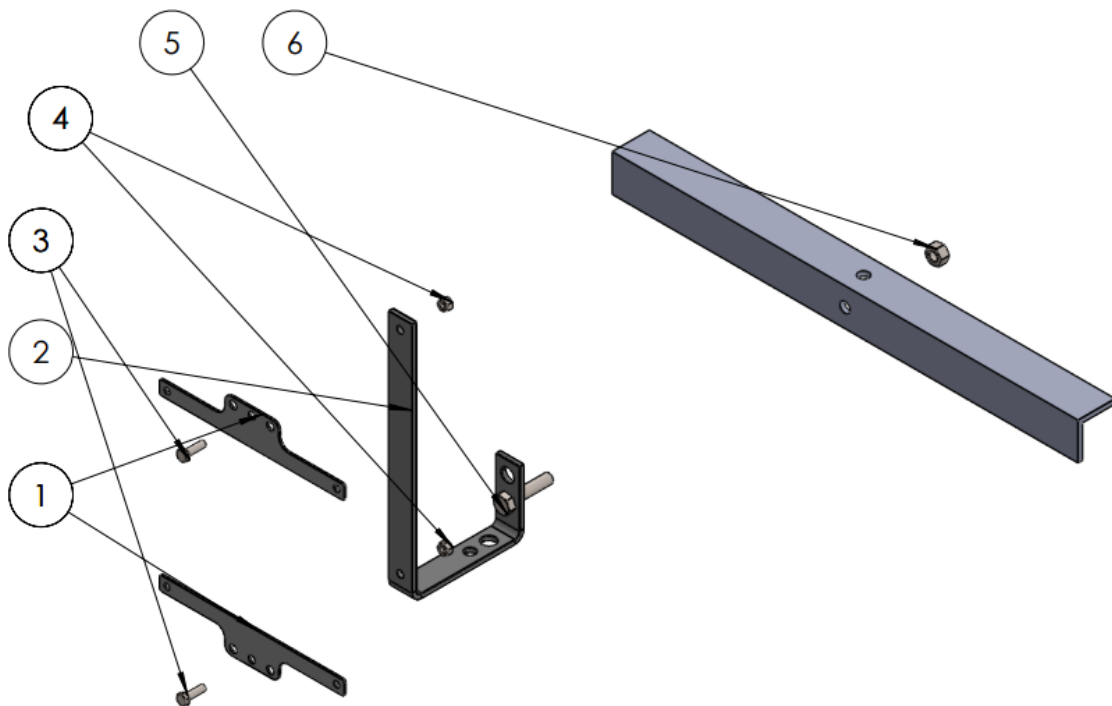


# IRRICONTROL

## ASSEMBLY INSTRUCTIONS



Picture 1: Angle Bracket mounting



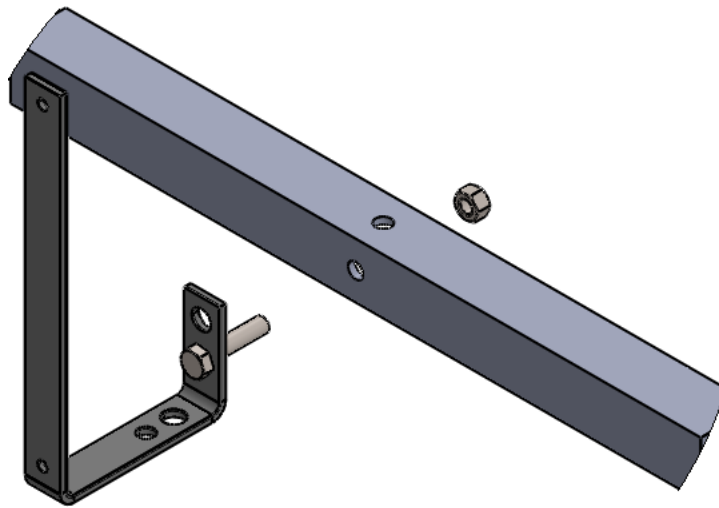
Picture 2: List of parts used

ITEM NUMBER	PART NAME	QUANTITY
1	Big Hanger Bracket	2
2	Angle Bracket	1
3	Hex Screw M6 x 20mm	2
4	Nut M6	2
5	Hex Screw M10x50mm	1
6	Nut M10	1

There are two mounting options, that will depend on what type of pivot is going to be installed. The 15 mm diameter hole is an auxiliary hole in case the pivot already has a screw installed. Therefore, it can be used as a socket.

1

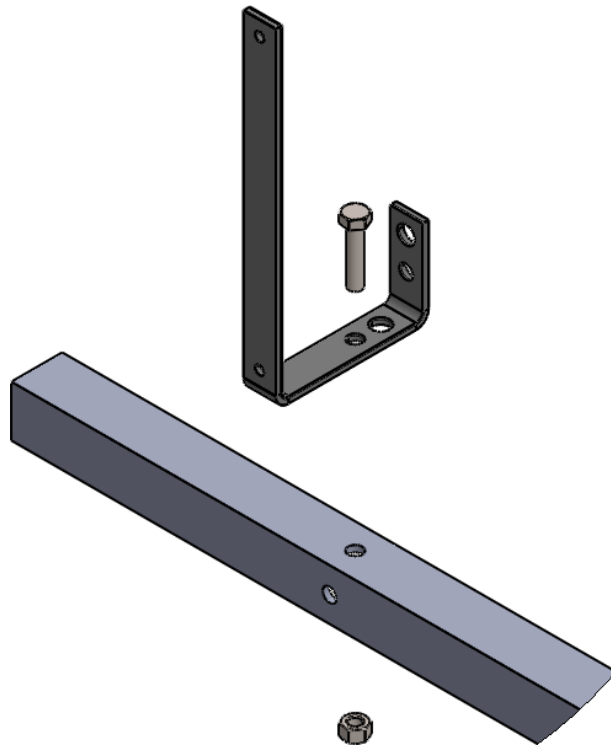
**1<sup>st</sup> option:** When the angle bracket is installed on the side face of the pivot's beam. Thus, it is necessary to fit the angle bracket together with the M10 screw and nut and secure it to the pivot.



Picture 3: 1<sup>st</sup> option assembly demonstration

2

**2<sup>nd</sup> option:** When the angle bracket is installed on the upper face of the pivot's beam. Thus, it is necessary to fit the angle bracket together with the M10 screw and nut and secure it to the pivot.



Picture 4: 2<sup>nd</sup> option assembly demonstration

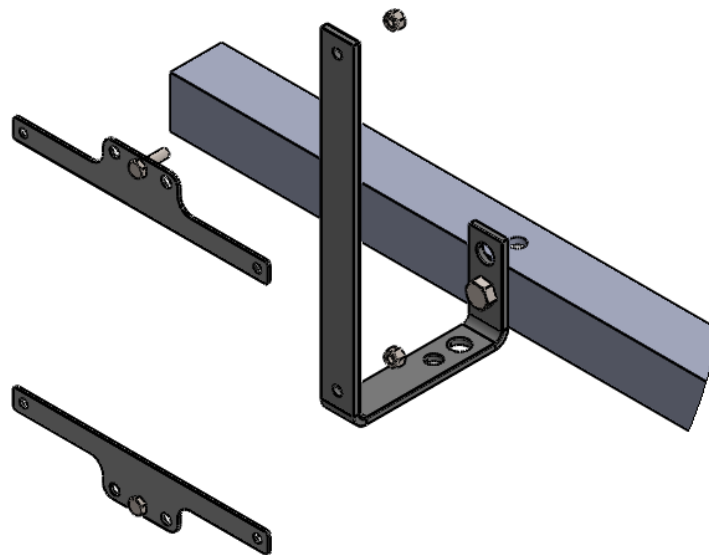
3

After securing the angle bracket to the pivot, the largest china box is placed, along with its hanger bracket.

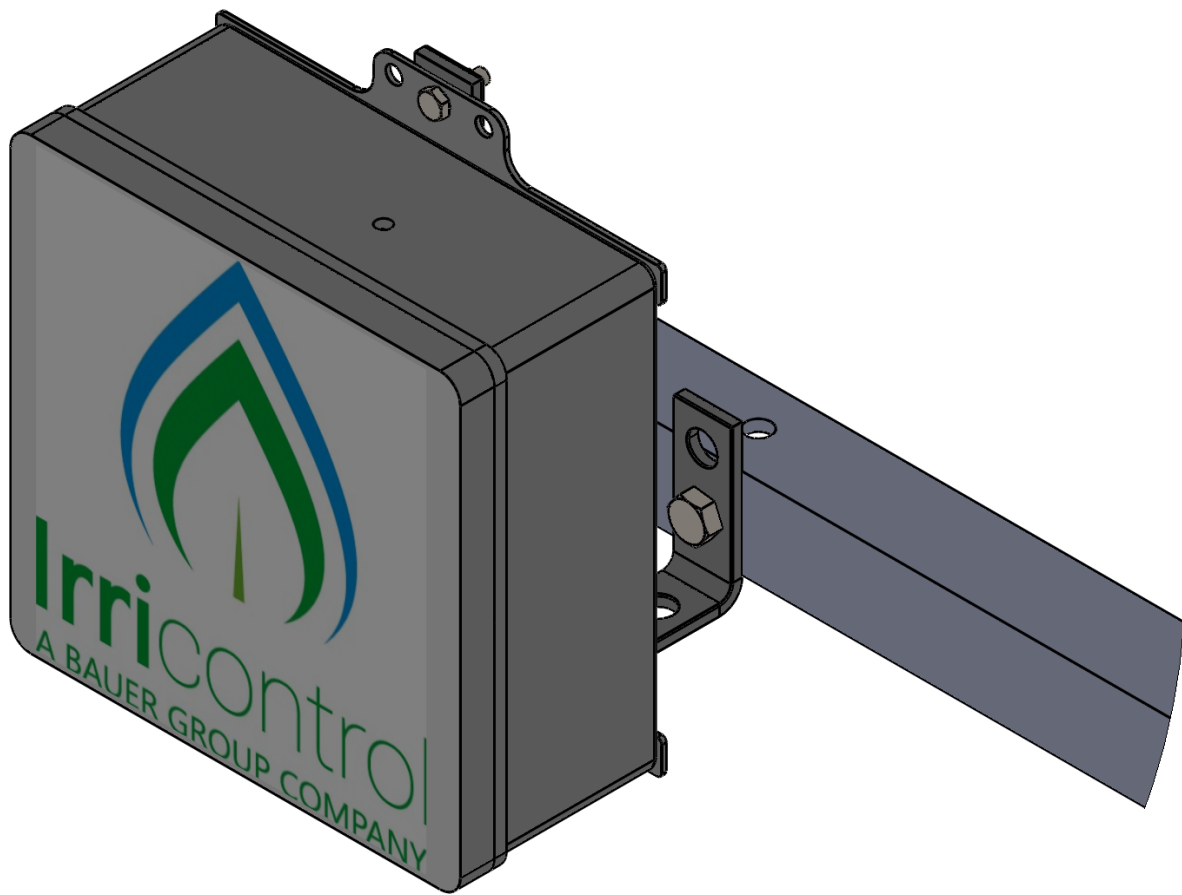
**Note:** the box design was removed for didactic reasons. The manual's purpose is to show you how to assemble the support.

You must fit the hanger bracket together with the M6 screw and nut to the largest face of the angle bracket, where there are two 7mm diameter holes.

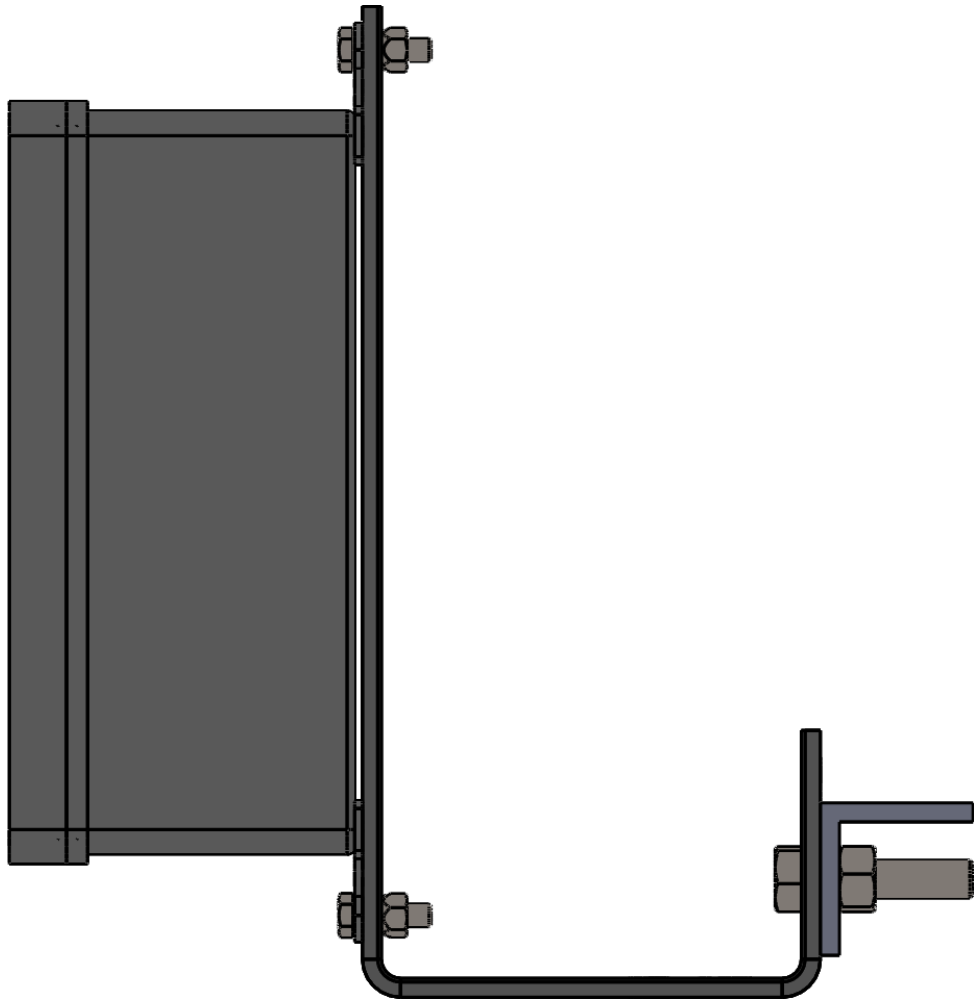
There are two hangers per stand.



Picture 5: 3<sup>rd</sup> step demonstration



Picture 6: Final Assembly



Picture 7: Final Assembly