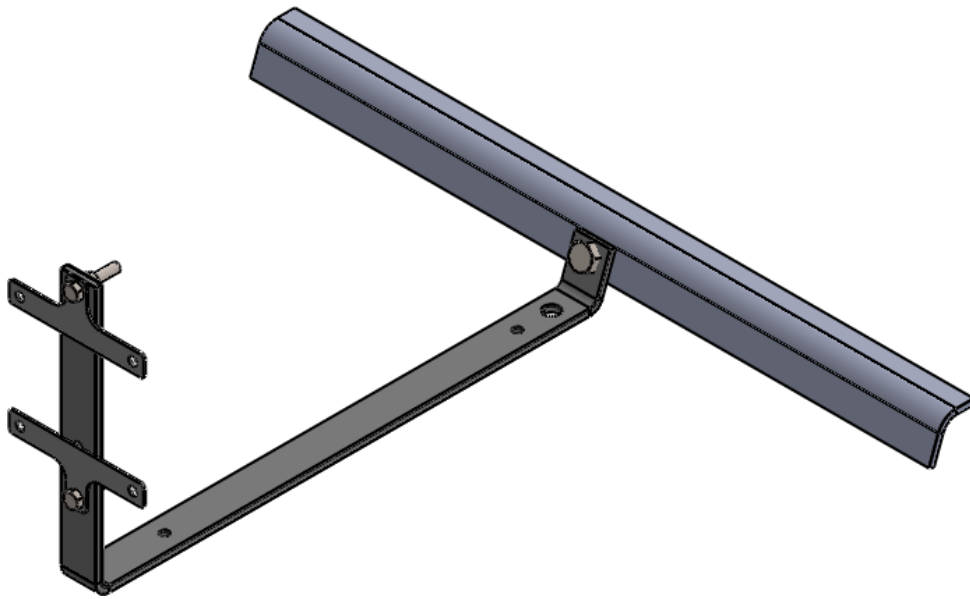
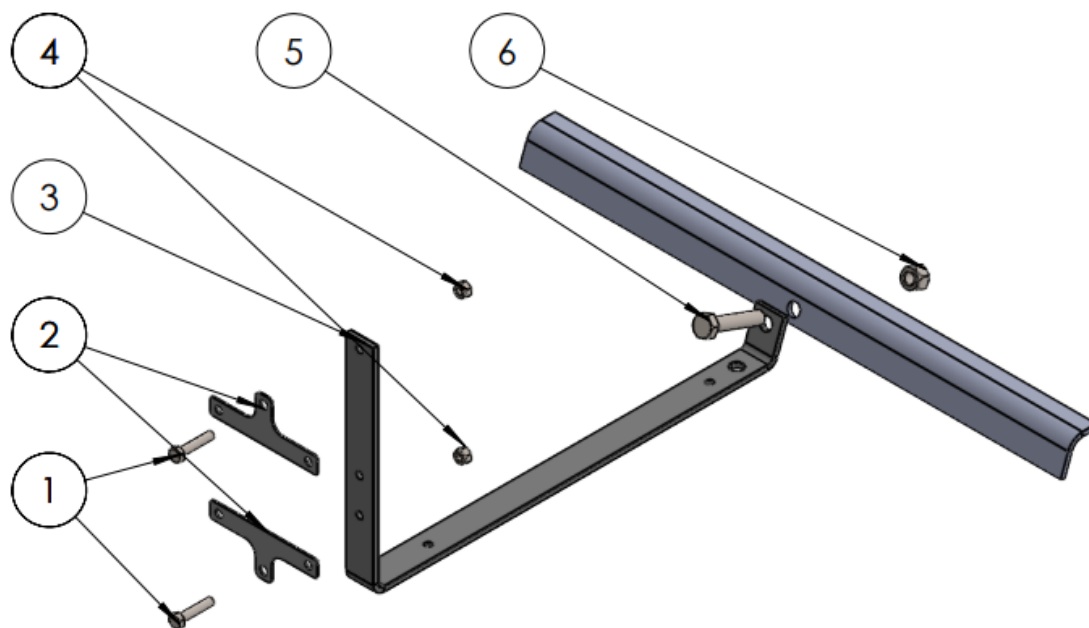


IRRICONTROL

ASSEMBLY INSTRUCTIONS



Picture 1: Inclined Stand Mounting

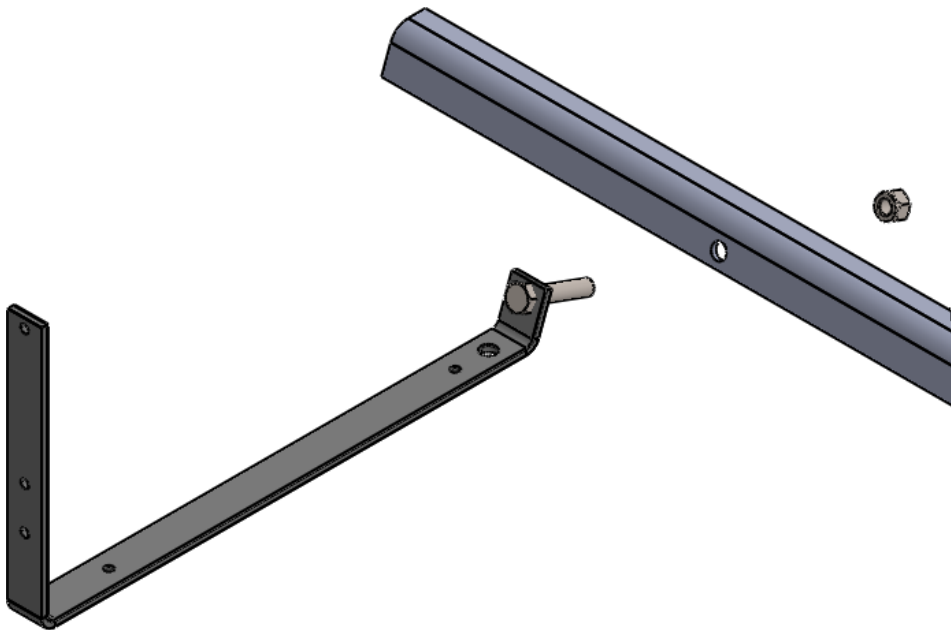


Picture 2: List of parts used

ITEM NUMBER	PART NAME	QUANTITY
1	Hex Screw M6x20mm	2
2	Small Hanger Bracket	2
3	Inclined Stand	1
4	Nut M6	2
5	Hex Screw M10x50mm	1
6	Nut M10	1

1

With the pivot face inclined, you must use the support's angled face for fitting. Fitting is done by using the M10 nut and screw.



Picture 3: Fitting the inclined stand to the pivot

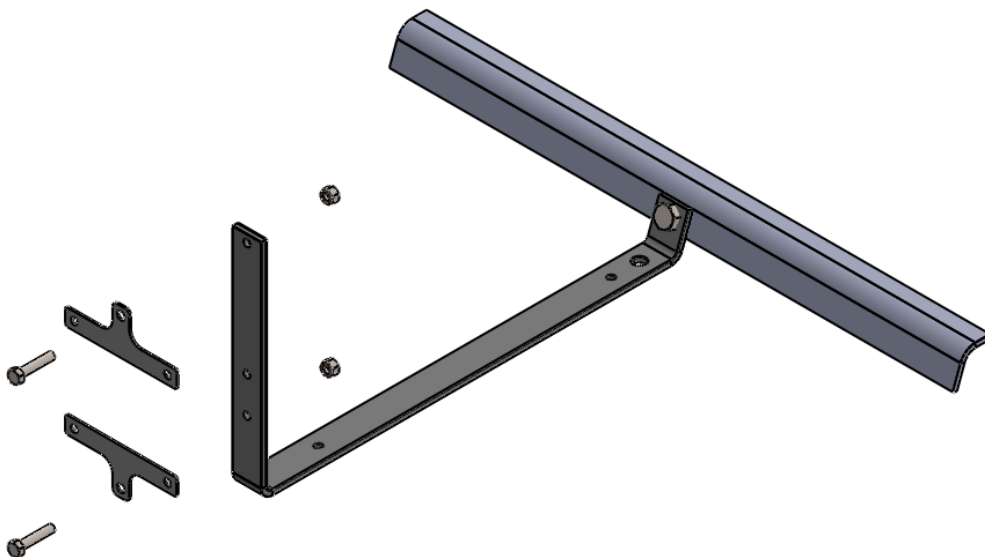
2

After securing the support to the pivot, the smallest china box is placed, along with its hanger bracket.

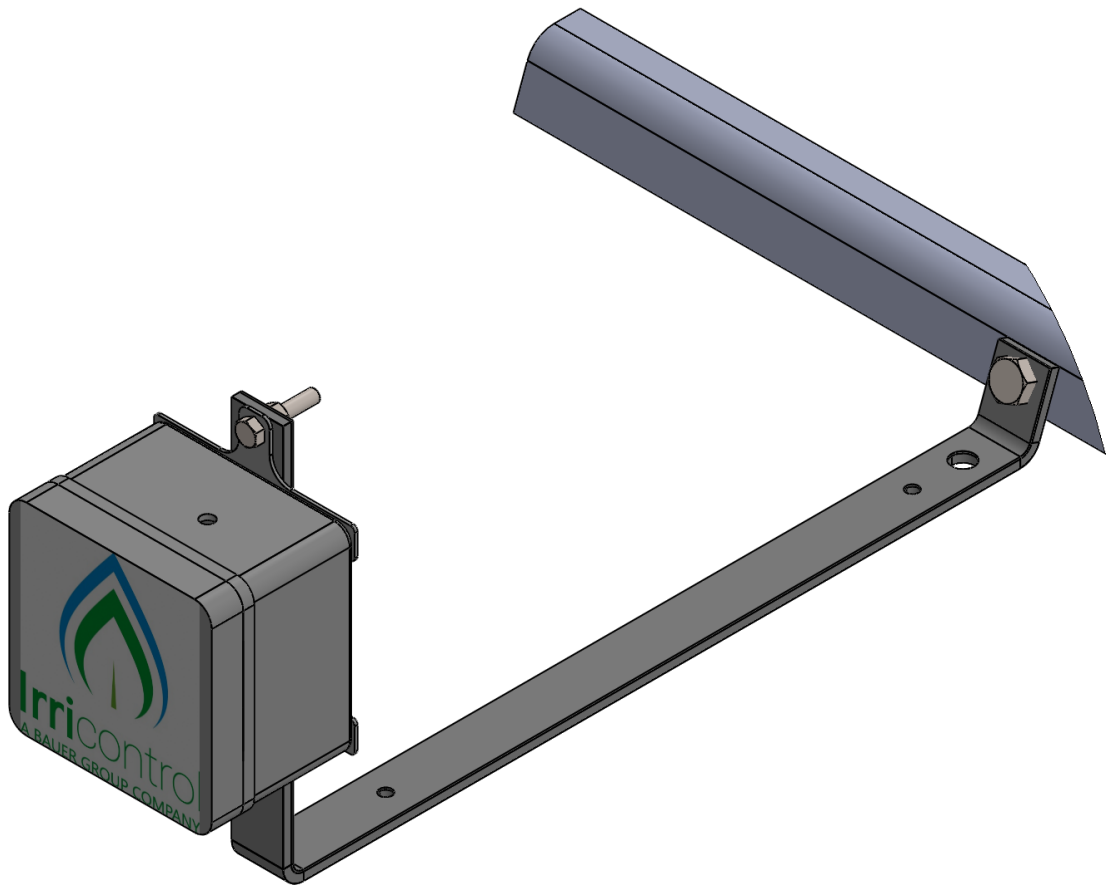
Note: The box design was removed for didactic reasons. The manual's purpose is to show you how to assemble the support.

You must fit the hanger bracket together with the M6 bolt and nut to the largest face of the stand, where there are two 7mm diameter holes.

There are two hangers per stand.



Picture 4: Fitting the smaller hanger to the inclined stand



Picture 5: Final Assembly



Picture 6: Final Assembly